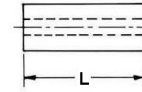
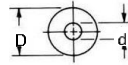
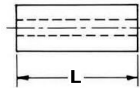
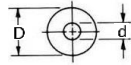


Round Spacers I/d 8.4mm - I/d 10.2mm Natural Nylon



d	D	L
8.4	15.0	2.0
8.4	15.0	3.0
8.4	15.0	4.0
8.4	15.0	5.0
8.4	15.0	6.0
8.4	15.0	7.0
8.4	15.0	7.5
8.4	15.0	8.0
8.4	15.0	9.0
8.4	15.0	10.0
8.4	15.0	11.0
8.4	15.0	12.0
8.4	15.0	12.5
8.4	15.0	13.0
8.4	15.0	14.0
8.4	15.0	15.0
8.4	15.0	16.0
8.4	15.0	17.0
8.4	15.0	17.5
8.4	15.0	18.0
8.4	15.0	19.0
8.4	15.0	20.0
8.4	15.0	21.0
8.4	15.0	22.0
8.4	15.0	22.5
8.4	15.0	23.0
8.4	15.0	24.0
8.4	15.0	25.0
8.4	15.0	26.0
8.4	15.0	27.0
8.4	15.0	28.0
8.4	15.0	29.0
8.4	15.0	30.0
8.4	16.0	2.0
8.4	16.0	3.0
8.4	16.0	4.0
8.4	16.0	5.0
8.4	16.0	6.0
8.4	16.0	7.0
8.4	16.0	7.5
8.4	16.0	8.0
8.4	16.0	9.0
8.4	16.0	10.0
8.4	16.0	11.0
8.4	16.0	12.0
8.4	16.0	12.5
8.4	16.0	13.0
8.4	16.0	14.0
8.4	16.0	15.0
8.4	16.0	16.0
8.4	16.0	17.0
8.4	16.0	17.5
8.4	16.0	18.0
8.4	16.0	19.0
8.4	16.0	20.0
8.4	16.0	21.0
8.4	16.0	22.0
8.4	16.0	22.5
8.4	16.0	23.0
8.4	16.0	24.0
8.4	16.0	25.0
8.4	16.0	26.0
8.4	16.0	27.0
8.4	16.0	28.0
8.4	16.0	29.0
8.4	16.0	30.0

d	D	L
8.4	16.0	22.5
8.4	16.0	23.0
8.4	16.0	24.0
8.4	16.0	25.0
8.4	16.0	26.0
8.4	16.0	27.0
8.4	16.0	28.0
8.4	16.0	29.0
8.4	16.0	30.0
8.4	17.0	3.0
8.4	17.0	4.0
8.4	17.0	5.0
8.4	17.0	6.0
8.4	17.0	7.0
8.4	17.0	7.5
8.4	17.0	8.0
8.4	17.0	9.0
8.4	17.0	10.0
8.4	17.0	11.0
8.4	17.0	12.0
8.4	17.0	12.5
8.4	17.0	13.0
8.4	17.0	14.0
8.4	17.0	15.0
8.4	17.0	16.0
8.4	17.0	17.0
8.4	17.0	17.5
8.4	17.0	18.0
8.4	17.0	19.0
8.4	17.0	20.0
8.4	17.0	21.0
8.4	17.0	22.0
8.4	17.0	22.5
8.4	17.0	23.0
8.4	17.0	24.0
8.4	17.0	25.0
8.4	17.0	26.0
8.4	17.0	27.0
8.4	17.0	28.0
8.4	17.0	29.0
8.4	17.0	30.0

d	D	L
8.4	20.0	2.0
8.4	20.0	3.0
8.4	20.0	4.0
8.4	20.0	5.0
8.4	20.0	6.0
8.4	20.0	7.0
8.4	20.0	7.5
8.4	20.0	8.0
8.4	20.0	9.0
8.4	20.0	10.0
8.4	20.0	11.0
8.4	20.0	12.0
8.4	20.0	12.5
8.4	20.0	13.0
8.4	20.0	14.0
8.4	20.0	15.0
8.4	20.0	16.0
8.4	20.0	17.0
8.4	20.0	17.5
8.4	20.0	18.0
8.4	20.0	19.0
8.4	20.0	20.0
8.4	20.0	21.0
8.4	20.0	22.0
8.4	20.0	22.5
8.4	20.0	23.0
8.4	20.0	24.0
8.4	20.0	25.0
8.4	20.0	26.0
8.4	20.0	27.0
8.4	20.0	28.0
8.4	20.0	29.0
8.4	20.0	30.0
8.4	25.0	2.0
8.4	25.0	3.0
8.4	25.0	4.0
8.4	25.0	5.0
8.4	25.0	6.0
8.4	25.0	7.0
8.4	25.0	7.5
8.4	25.0	8.0
8.4	25.0	9.0
8.4	25.0	10.0
8.4	25.0	11.0
8.4	25.0	12.0
8.4	25.0	12.5
8.4	25.0	13.0
8.4	25.0	14.0
8.4	25.0	15.0
8.4	25.0	16.0
8.4	25.0	17.0
8.4	25.0	17.5
8.4	25.0	18.0
8.4	25.0	19.0
8.4	25.0	20.0
8.4	25.0	21.0
8.4	25.0	22.0

d	D	L
8.4	25.0	22.5
8.4	25.0	23.0
8.4	25.0	24.0
8.4	25.0	25.0
8.4	25.0	26.0
8.4	25.0	27.0
8.4	25.0	28.0
8.4	25.0	29.0
8.4	25.0	30.0

d	D	L
10.2	20.0	2.0
10.2	20.0	3.0
10.2	20.0	4.0
10.2	20.0	5.0
10.2	20.0	6.0
10.2	20.0	7.0
10.2	20.0	7.5
10.2	20.0	8.0
10.2	20.0	9.0
10.2	20.0	10.0
10.2	20.0	11.0
10.2	20.0	12.0
10.2	20.0	12.5
10.2	20.0	13.0
10.2	20.0	14.0
10.2	20.0	15.0
10.2	20.0	16.0
10.2	20.0	17.0
10.2	20.0	17.5
10.2	20.0	18.0
10.2	20.0	19.0
10.2	20.0	20.0
10.2	20.0	21.0
10.2	20.0	22.0
10.2	20.0	22.5
10.2	20.0	23.0
10.2	20.0	24.0
10.2	20.0	25.0
10.2	20.0	26.0
10.2	20.0	27.0
10.2	20.0	28.0
10.2	20.0	29.0
10.2	20.0	30.0

d	D	L
10.2	25.0	2.0
10.2	25.0	3.0
10.2	25.0	4.0
10.2	25.0	5.0
10.2	25.0	6.0
10.2	25.0	7.0
10.2	25.0	7.5
10.2	25.0	8.0
10.2	25.0	9.0
10.2	25.0	10.0
10.2	25.0	11.0
10.2	25.0	12.0
10.2	25.0	12.5
10.2	25.0	13.0
10.2	25.0	14.0
10.2	25.0	15.0
10.2	25.0	16.0
10.2	25.0	17.0
10.2	25.0	17.5
10.2	25.0	18.0
10.2	25.0	19.0
10.2	25.0	20.0
10.2	25.0	21.0
10.2	25.0	22.0
10.2	25.0	22.5
10.2	25.0	23.0
10.2	25.0	24.0
10.2	25.0	25.0
10.2	25.0	26.0
10.2	25.0	27.0
10.2	25.0	28.0
10.2	25.0	29.0
10.2	25.0	30.0

Further Combinations With Regards To Sizes Are Available On Request